

*Infrastructure & Connectivity Solutions*



**PRODUCT CATALOG**

**Optical** Interconnect

214.239.3988

fax 972.331.3410

[opticalinterconnect.com](http://opticalinterconnect.com)

**a woman owned small business**

# Contents

<b>Data Center Solutions . . . . .</b>	<b>4</b>
Cabinets and Racks . . . . .	5
Enclosures. . . . .	6
Modular Components. . . . .	7
<b>LAN Solutions . . . . .</b>	<b>8</b>
Rack Mount Enclosures . . . . .	8
Wall Mount Enclosures . . . . .	9
<b>Trunks and Jumpers . . . . .</b>	<b>10</b>
<b>Cable Management . . . . .</b>	<b>12</b>
<b>Adapters . . . . .</b>	<b>13</b>
<b>Available Assembly Types . . . . .</b>	<b>14</b>
<b>Quality &amp; Return Policies . . . . .</b>	<b>15</b>

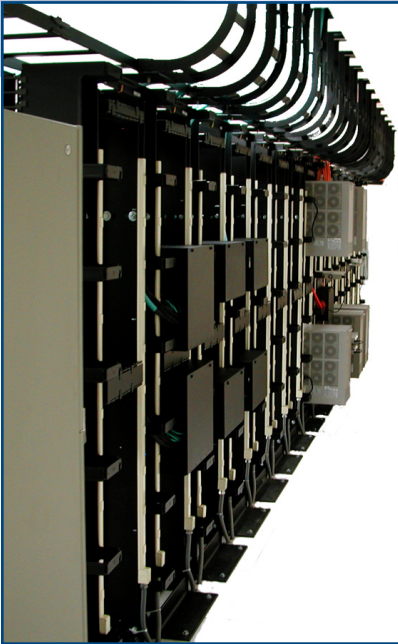
***Optical Interconnect***  
 2621 Summit Ave., Ste. 100  
 Plano, TX 75074  
 Phone: 866-493-3588  
 Fax: 972-331-3410  
[sales@opticalinterconnect.com](mailto:sales@opticalinterconnect.com)  
[www.opticalinterconnect.com](http://www.opticalinterconnect.com)



**ISO 9001:2000 Certified (QMS)**



# Infrastructure & Connectivity Solutions



**Optical Interconnect** is a woman owned small business with over 13 years experience building fiber optic solutions and assemblies. Our goal is to present information to our customers about the industries best practices for connectivity solutions such as ESCON, FICON, SAN, LAN, WAN, MAN, DWDM and general network connectivity in order to find the solution that provides the most value to each end user.

Our services range from providing fiber optic patch cords to planning, designing, installing, documenting and warranting a complete turnkey connectivity solution.

Optical Interconnect offers the industry's most robust and scalable fiber optic connectivity solutions including slim-pack/uni-body patch cords to high-density modular MTP/MPO ribbon array products. We also offer quick turnaround expedite delivery on fiber optic products.



We assemble our cables "in-house", providing total custom cable solutions with the fastest lead times anywhere. **Most orders received before 11:00 a.m. (CST) are shipped the same day.** Our on-site engineering department is always available to answer any questions that you may have or to assist in designing a custom solution that is right for you. Here is a small sample of what Optical Interconnect can offer you:

- All common length cables at unbelievable "Stock" prices.
- Multi-fiber cable assemblies from 4 fibers to 144 fibers.
- We offer a large variety of cable types: single or multi mode, 50/125, 10 Gig, etc.
- A complete line of fiber connectors: SC, ST, LC, FC, MTRJ, MTP/MPO, MU, ESCON, D4, Biconics, etc.
- Data Center specialists that deal in all aspects of physical layer infrastructure solutions including:
  - Fiber Enclosures (Patch Panels)
  - Conveyance Tray Systems
  - Fiber Optic Assemblies (Patch Cords, Multi-Fiber Trunk Cables and Arrays)

Optical Interconnect is your economical, dependable, one stop source for all of your fiber optic needs. For more information please feel free to contact us via e-mail [sales@opticalinterconnect.com](mailto:sales@opticalinterconnect.com) or phone 214-239-3988.

At Optical Interconnect we pride ourselves on quick response and high-level quality service.

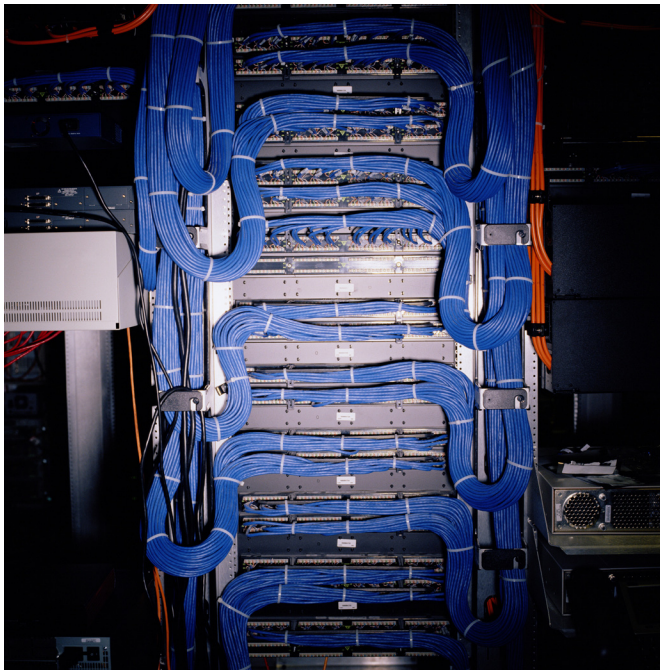
***Thank you for choosing Optical Interconnect!***



## Datacenter Solutions

Cabinets and Racks .....	5
Enclosures .....	6
Modular Components .....	7

Optical Interconnect offers scalable solutions that allow your company to retain more of your initial cabling investment when moves, adds, or changes occur providing tremendous flexibility within your network. In the future, when new equipment emerges, you can feel confident that connectivity solutions from Optical Interconnect will allow you to take advantage of these new technologies with the least amount of transition time and cost.



At Optical Interconnect, we use products and components that meet or exceed industry standards to deliver a superior solution customized to each individual end user's requirements. The Data Center Division at Optical Interconnect also provides complete and reliable cable assemblies that meet or exceed the rigid specifications of our customers.

Our goal is to **provide a true turnkey solution** with the most possible value and a focus on each end user's specific requirements.

## Cabinets & Racks



### *Cabinets*

Cabinets are the core components of every fiber infrastructure system providing protection for fiber optic patching requirements and securing those connections from accidents and malicious actions.

Cabinets come in configurations from four to seven feet tall and nineteen, twenty-three and twenty-four inches in width. Standard colors: black and beige are available.



### *Racks*

If your systems do not have a strong foundation, you set yourself up to fail. Optical Interconnect is dedicated to helping you maintain the technology behind your business.

Our racks are designed to meet the ongoing demand of your cabling needs and come in both the 19 or the 23 inch standard.

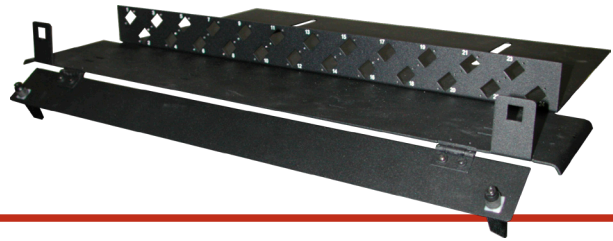
## Patch Panels & Enclosures



6RU - 288 Channel



1RU Enclosure

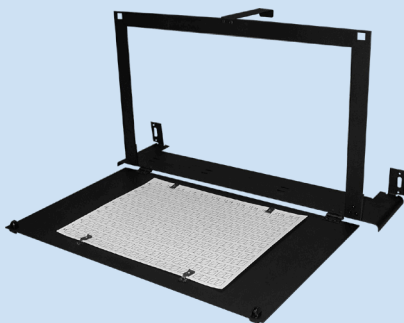


### Typical Applications

- Server Cabinets for SAN Storage Area Network Environment
- Used in any rack or cabinet where space is limited
- In zone areas for applications such as Tape, DASD and Server connectivity
- Inside vendor active equipment cabinets to provide cleaner and flexible cable management

### Standard Options

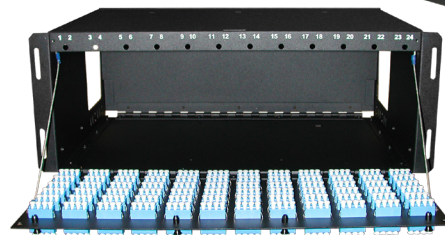
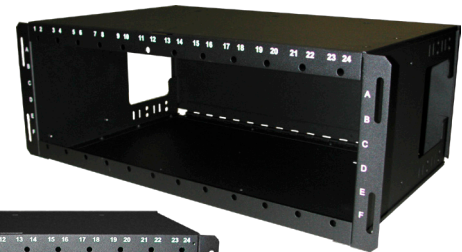
- LC Duplex
- LC Quad
- MT-RJ
- MU Duplex
- SC Duplex
- SC Simplex
- ESCON to ESCON



Our Modular Patch Panels are designed to transition or couple modular MTP or MPO style trunk cables to multiple types of standard connector interfaces such as ST, SC, MT-RJ, LC, MU, ESCON, etc.

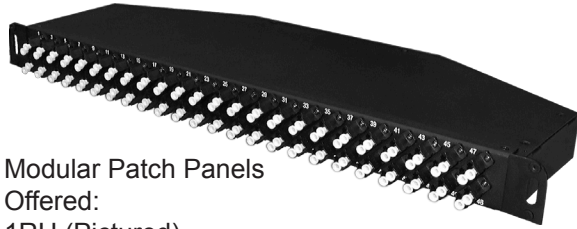
The MTP/MPO modular trunk cables attach to the enclosure from the rear. These panels are very dense and can be changed out quickly. These panels can be installed in open relay racks, enclosed cabinets and vendor provided equipment cabinets.

Where applicable couplers are available with Metal (Phosphorous Bronze) or Ceramic (Zirconia) alignment sleeves.



4RU Enclosure

## Modular Components



Modular Patch Panels  
Offered:  
1RU (Pictured)  
4RU  
6RU  
9RU

Using modular components saves your company money while reducing installation time.

- Easy to Manage
- Fast MAC's
- Field Up-gradable
- **NO** Field Terminations
- 100% Tested & Certified
- Multimode & Singlemode
- All Connector Styles

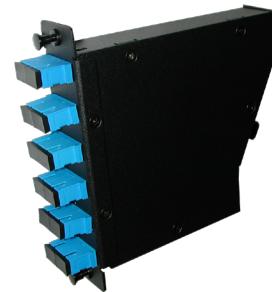


Coupling Facilities (Under floor and Wall Mount)

Protection for MTP/MPO coupling points for transition to any type interface (director or cpu areas)



Coupling Brackets  
6 Position L Bracket  
10 Position CPU Bracket

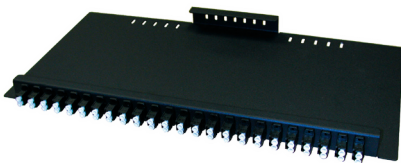


Modular Cassettes  
Offered:  
4RU - 6 -12 channel (Shown)  
6RU - 6 -12 channel  
9RU - 18 channel

## LAN Solutions

## Rack Mount Enclosures

Slide Trays



### Rack Mount Key Features

- Designation labelling on front and rear doors
- Available with pre-terminated multifiber trunks to save time and money
- Easy to install 6-pack bulkhead/adaptor plates (ST, FC, D4, SMA, SC, SC Duplex, MT-RJ, LC, MU, ESCON, etc)
- Optional: Splice trays

Our patch panels and wall mount enclosures are designed to transition multifiber trunk cables to multiple types of standard connector interfaces such as ST, FC, D4, SMA, SC, SC Duplex, MT-RJ, LC, MU, ESCON, etc.

Rack mount cabinets are accessible from the front and rear. Wall mounted models are accessible from the front and all four corners. Panels are very dense and can be changed out quickly.

Rack mount enclosures can be installed in



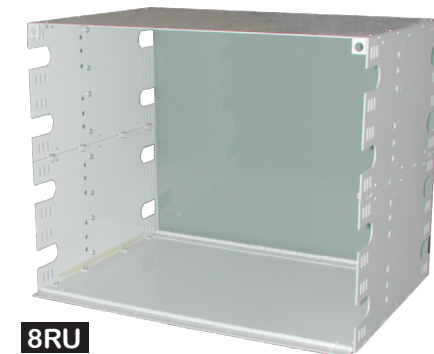
1RU



2RU



4RU



8RU

### Details

#### 1RU

(HD1RU) 6/12 Port with Slide Tray  
 Height: 1.75" (1RU)  
 Color: IBM Beige/Light Tan, White, Black  
 Dimensions: 17"W 1.75"H 12"D  
 Capacity: up to 72 Fiber

#### 2RU

(HD2RU) 24 Port  
 Height: 3.5" (2RU)  
 Color: IBM Beige/Light Tan, White, Black  
 Dimensions: 17"W 3.5"H 12"D  
 Capacity: up to 144 Fiber

#### 4RU

(HD4RU) 72 Port  
 Height: 7" (4RU)  
 Color: IBM Beige/Light Tan, White, Black  
 Dimensions: 17"W 7"H 12"D  
 Capacity: up to 288 Fiber

#### 8RU

(HD8RU) 144 Port Max  
 Height: 14" (8RU)  
 Color: IBM Beige/Light Tan, White, Black  
 Dimensions: 17"W 14"H 12"D  
 Capacity: up to 288 Fiber



4RU Insert



open relay racks, enclosed cabinets and vendor provided equipment cabinets.

Coupler housings on the front of each coupler panel are color coded adhering to industry standards, offered in beige for multimode 62.5/125, black for multimode 50/125, blue for singlemode 8.3/125 and green for singlemode (APC) angle polish 8.3/125. Allowing you to establish what type of connector needs to be plugged in the front of the panel with just a glance.

### Details

#### 12 Port

Height: 8" (Wall Mount)  
Color: IBM Beige/Light Tan, White, Black  
Dimensions: 11.5"W 8"H 3.5"D  
Capacity: 12 Port

#### 24 Port

Height: 16" (Wall Mount)  
Color: IBM Beige/Light Tan, White, Black  
Dimensions: 16"W 16"H 3"D  
Capacity: 24 Port

#### 48 Port

Height: 16" (Wall Mount)  
Color: IBM Beige/Light Tan, White, Black  
Dimensions: 16"W 16"H 9"D  
Capacity: 48 Port

#### 72 Port

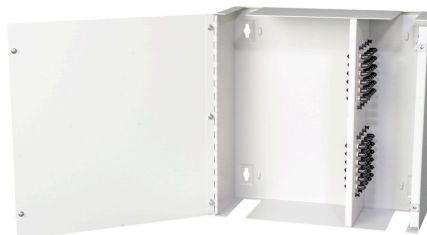
Height: 16" (Wall Mount)  
Color: IBM Beige/Light Tan, White, Black  
Dimensions: 16"W 16"H 9"D  
Capacity: 72 Port



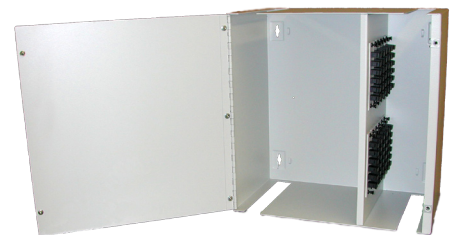
12 Port



24 Port



48 Port



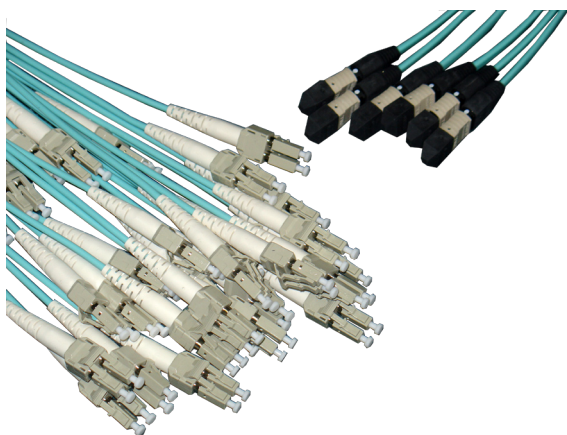
72 Port

## Wall Mount Enclosures

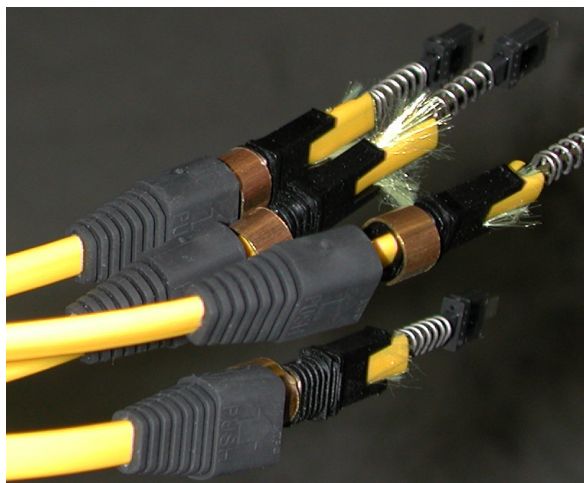
### Wall Mount Key Features

- Universal mounting brackets for full compatibility with standard 19-inch and 23-inch racks and cabinets.
- Designation labelling on front and rear doors
- Available with pre-terminated multifiber trunks to save time and money
- Easy to install 6-pack bulkhead/adapter plates (ST, FC, D4, SMA, SC, SC Duplex, MT-RJ, LC, MU, ESCON, etc)
- Optional: Slide/Splice trays
- Optional: Smoked doors

## Trunks and Jumpers



Optical Interconnect's cable choices include indoor, outdoor, dual-use indoor/outdoor, armored cable in conduit as well as traditional riser, plenum and low smoke/zero halogen solutions.



Today's communications networks generally use two types of optical fibers, Singlemode and Multimode fiber.

To accommodate a wide variety of environments, these optical fibers are encased in a variety of protective sheaths. However, basic cable construction can be categorized into two solutions, loose tube and tight buffered construction.

Today's fiber jumpers are made with the Tight Buffered construction. Core size in the Singlemode is available at 8.3 $\mu$ m and the Multimode core is available in three sizes; 50 $\mu$ m, 62.5 $\mu$ m and a 10 gig 50 $\mu$ m.

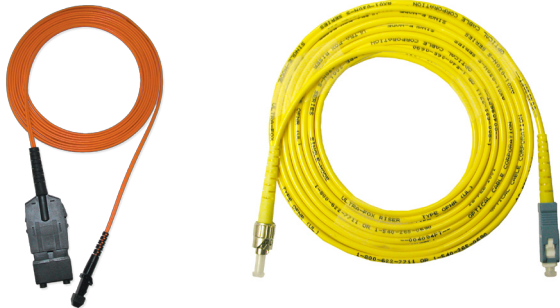
Basic Coatings - as fiber is manufactured, a base coat of ultraviolet acrylate is applied which provides a moisture and mechanical protective layer. The standard diameter at this point is 125 $\mu$ m. From this basic configuration, additional coatings are applied as per the cable specification.

Fiber jumpers from Optical Interconnect provide the full circle connectivity between patch panels at the central network point of administration, or between patch panels and production hardware.

Patch cords are available in any length and many different connector styles and polishes, all designed to provide reliable, flexible connectivity solutions.

Tight Buffered fiber consists of single strands of fiber buffered with an additional layer of protective coating and placed directly into the construction of the cable.

For most manufacturers the working diameter for this outer coating is 900 $\mu$ m. Wrapped with Kevlar for added protection, the fibers are then coated with a variety of sheaths available from a 1.6mm up to a 3.0mm. The tight buffer constructed cable is the cable of choice for interior and some indoor/ outdoor installations. The 900 $\mu$ m buffered coating allows for the direct connectorization of the fiber.



### ***Jumpers***

Reliable, flexible connectivity options. Available in any length with any connection option.

---

### ***Multi Fiber***

Multi-fiber assemblies are available in 50/125, 62.5/125 and 9/125 singlemode configurations for ST, SC, LC, MT-RJ, MU and FC connectors. 10 Gbps 50/125 and MTP/MPO solutions are included in our custom assemblies. Available in round cable from 2 to 144 fibers in one jacket.

### ***Trunks***

Use where high point density is necessary for one to many connections. External / Ruggedized Harnesses, MTP/MPO, ST, SC, ESCON, MT-RJ, LC, or MU connectors.



---

Our reputation in the industry for high quality custom assemblies ensures that our customers receive the finest products available. At Optical Interconnect, our Sales Staff, Engineering Department and Production Team work hand in hand to provide a full range of cable assembly needs, whether for customer defined specification or best commercial practices.

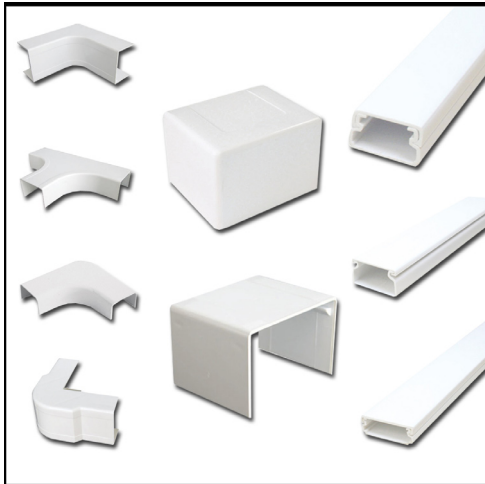
## Cable Management

### Under Floor Boxes

Optical Interconnect offers several standard under floor boxes and will also build custom boxes to support your specific requirements. Whether you need an under floor box for coupling, splicing, ribbon array transition point, or a custom shaped or sized box to support a unique need, OI has your solution.



Under-floor boxes can be used as a zone area junction point instead of a cabinet and rack mounted patch panel to free up valuable floor space.

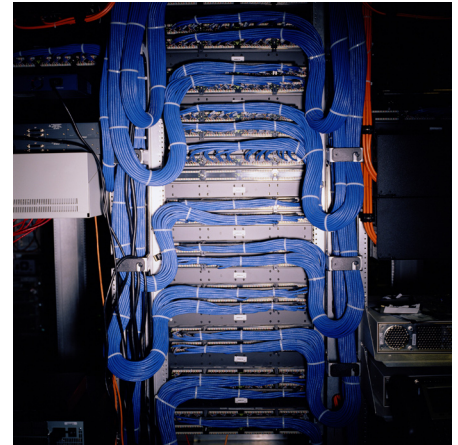


### Raceway System

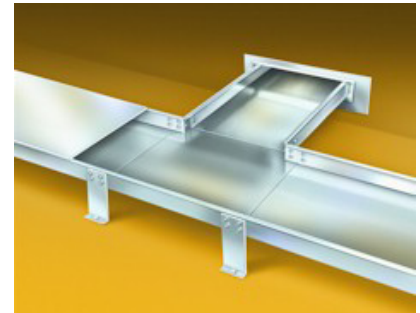
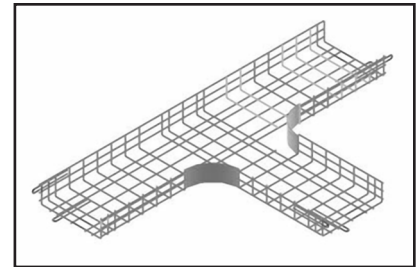
Used for fiber optic and Cat5 cable, MultiRaceway is easily installed.

Holding cables to a one inch bend radius, end to end connectivity is maintained even when loaded to capacity.

Available in 3/4", 1 1/4" and 1 3/4" sizes.



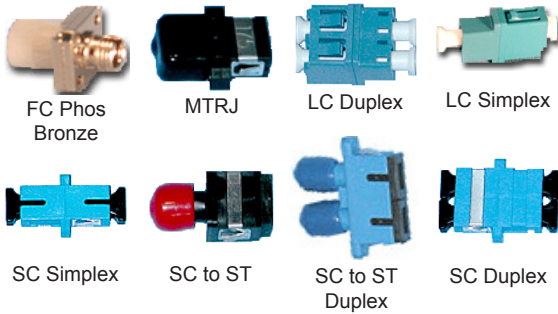
Vertical and Horizontal Cable Management Solutions



### Conveyance Trays

Organization and protection. Two key reasons to support your fiber installations with conveyance trays.

Optical Interconnect offers a full line of conveyance trays for your business.



## Adapters / Adapter Plates



Our line of plates fit all our fiber wall and rack mount enclosures. Available loaded or unloaded, these plates are for use with FC, LC Simplex, LC Duplex, LC Quad, SC Simplex, SC Duplex, MT-RJ, MU and ST adapters.

### FEATURES

- Flexibility to add or change adapters easily
- Multiple types of adapters in one plate
- Different color adapters and dust caps (ST) for color coding

### PHYSICAL SPECIFICATIONS

- Materials: h
- Adapters: FC, LC Simplex, LC Duplex, LC Quad, SC Simplex, SC Duplex, MT-RJ, MU and ST



## Available Assembly Types

### Multi Mode or Single Mode

Duplex  
 Simplex  
 Multi Fiber Breakout  
 Multi Fiber Distribution  
 Pigtailed  
 Loopback  
 Minicord  
 8.3, 50, 62.5  
 Plenum  
 Colors  
 Military Spec  
 APC/UPC/SPC  
 Custom

### Single Mode

SC  
 ST  
 FC  
 LC  
 MTRJ  
 MTP  
 SC/APC  
 FC/APC  
 MTP/APC  
 OPTIJACK  
 MU  
 D4

### Multi Mode

SC  
 ST  
 FC  
 LC  
 MTRJ  
 MTP  
 ESCON  
 SMA906  
 FDDI  
 OPTIJACK  
 MU

### Military Connectors and Assemblies

M28876  
 MIL-ST

TFOCA-4  
 29504-Termini

38999

### Fiber Optic Products

Splice trays  
 Wall Mount Enclosures  
 Rack Mount Enclosures

Fixed Attenuators  
 Variable Attenuators  
 Biconic Cables

Fiber Patch Panels  
 Fiber Adapters & Couplers  
 Mode Conditioning Cables

### Copper Products

Cat5E Patch Cables  
 Cat6 Patch Cables

Crossover Cables  
 D-Sub Computer Cables

Modular Adapters  
 'F' Type Cables

## Quality & Return Policies

### *Optical Interconnect Quality Policy*

Our ambition is to provide our customer with value added service by way of superior products and continual improvement that satisfies or exceeds their expectations for Product Quality, Service and On Time Delivery.

**ISO 9001:2000 (QMS)**

---

### *Return Policy*

Prior approval must be obtained for any products being returned. Upon approval an RMA number will be assigned to the items being returned. This RMA number **MUST** appear on all shipping documents and on the outside of each carton. Failure to include the RMA number on the carton will result in refusal of delivery and return to the customer, freight collect. RMA numbers are valid 30 days from issue. Restocking fee may apply.

All returns should be shipped to:

Optical Interconnect  
2621 Summit Ave  
Suite 100  
Plano, TX 75074



**ISO 9001:2000 Certified (QMS)**

© 2008 Optical Interconnect -- All Rights Reserved  
20090622-001

